

Redo Aortic Root

Alberto Pochettino

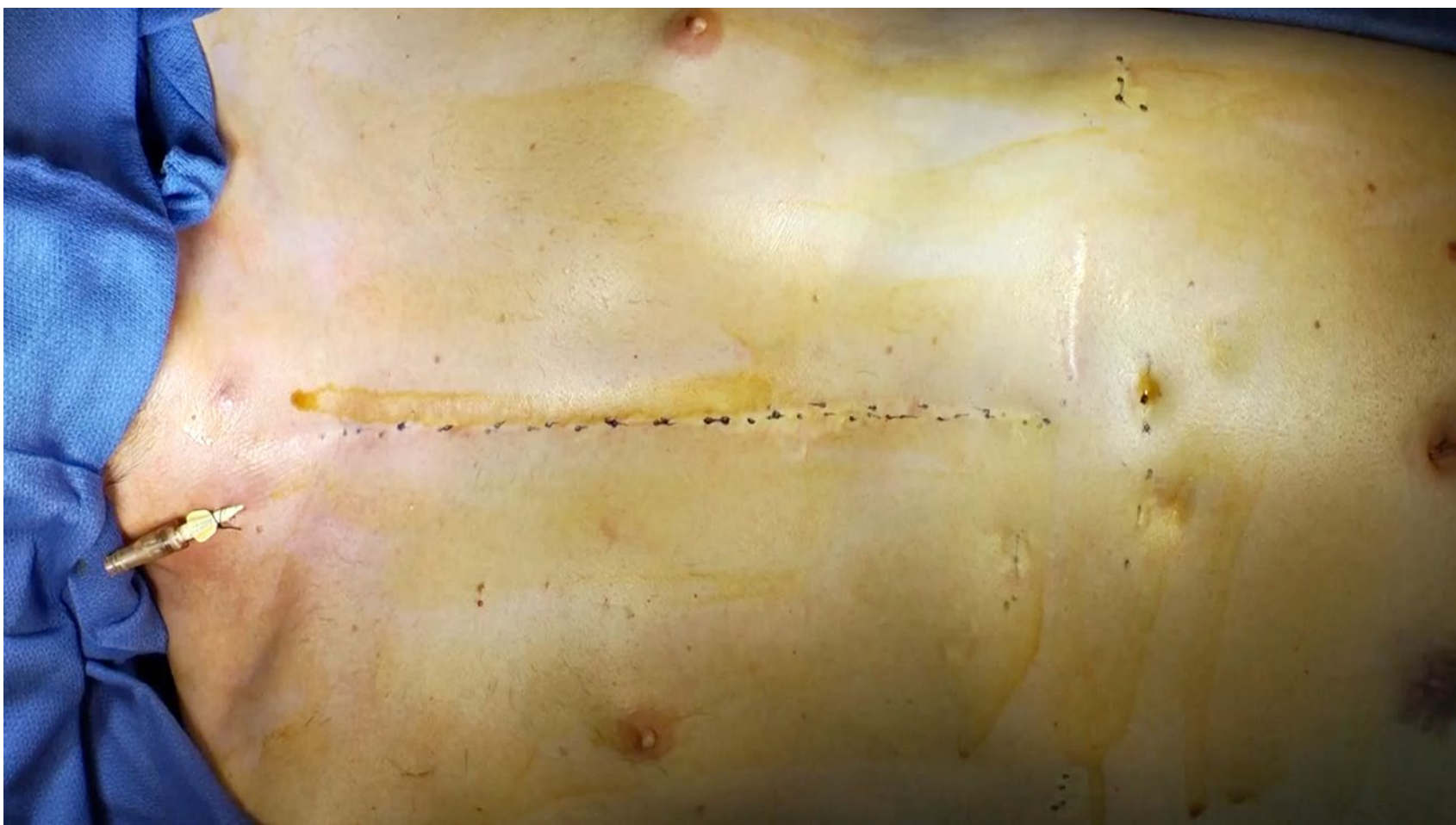
Proximal Aorta and Arch Aneurysm: Single Ventricle

32 year old, Male

- Tricuspid atresia, transposition of the great arteries, and VSD
- Repair: bidirectional Glenn, Fontan, mechanical aortic valve, and aortic reconstruction
- Presented with dilated and growing proximal aorta and arch

Pre Op CT





Dismissal CT



One Year Follow up CT

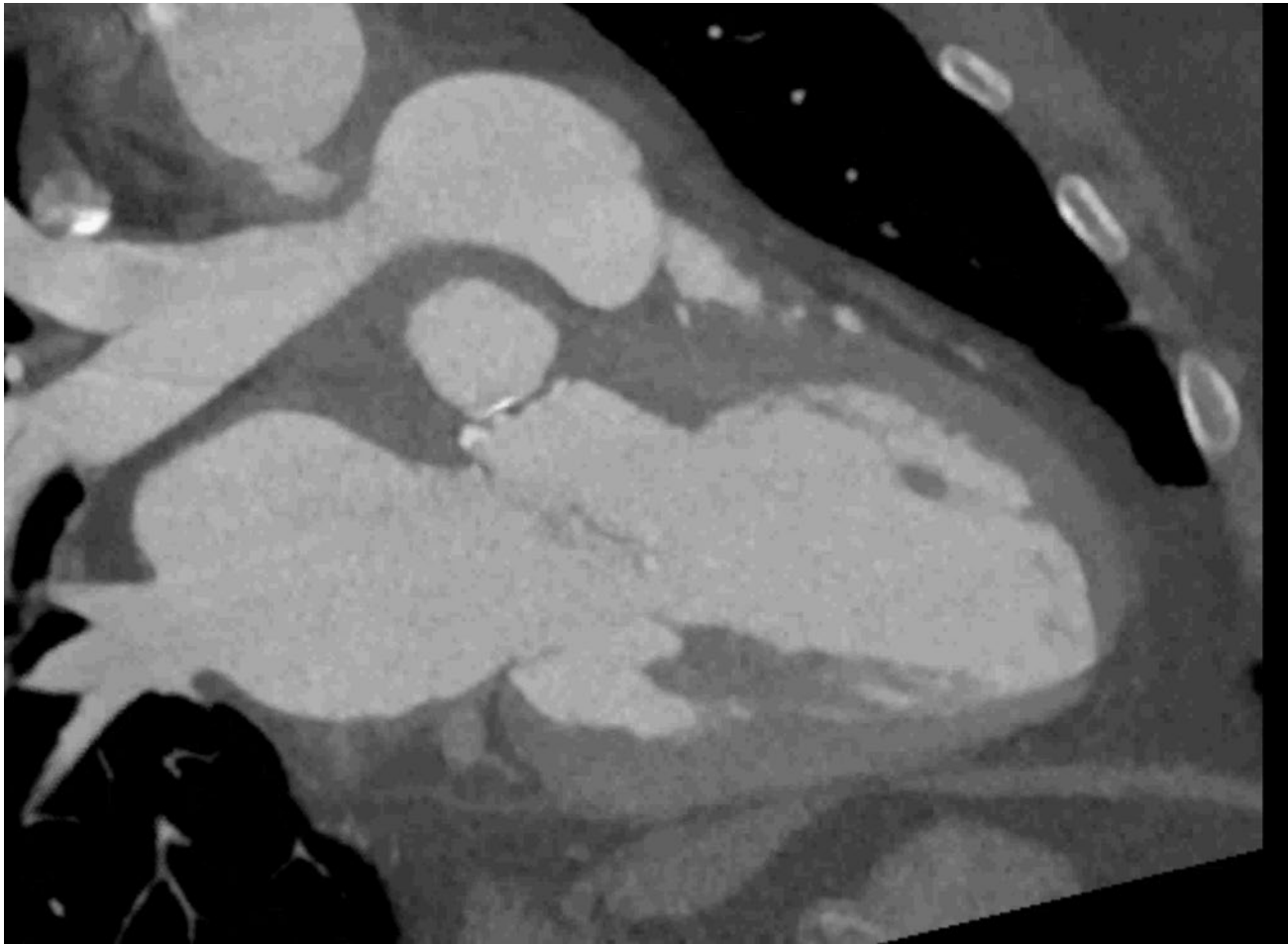


Infected Aortic Root:
Previous Florida Sleeve

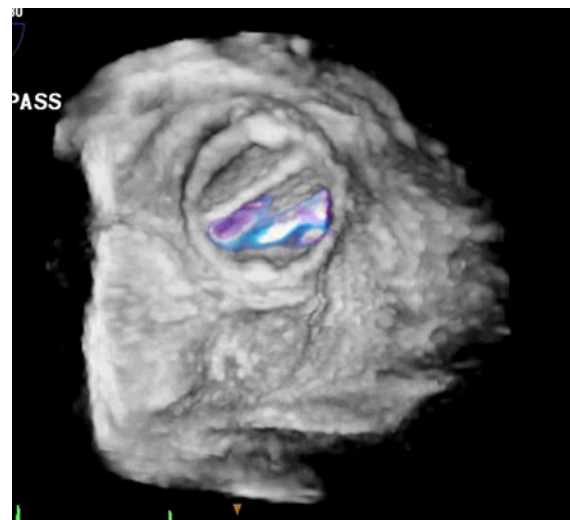
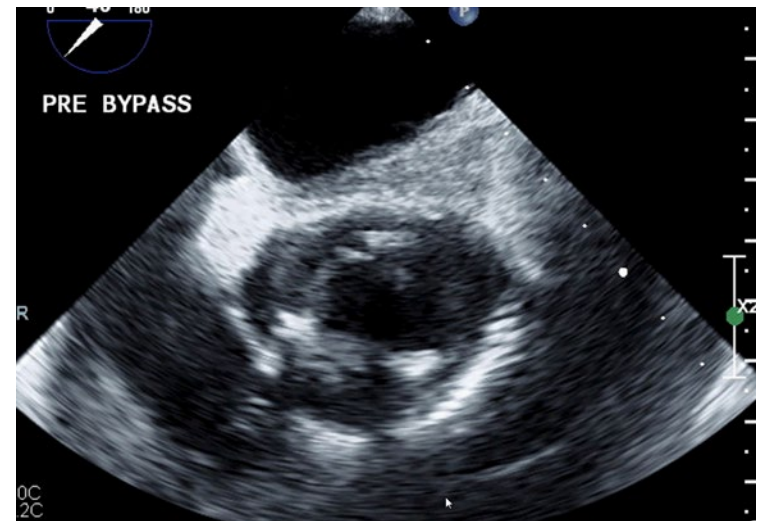
55 year old, man

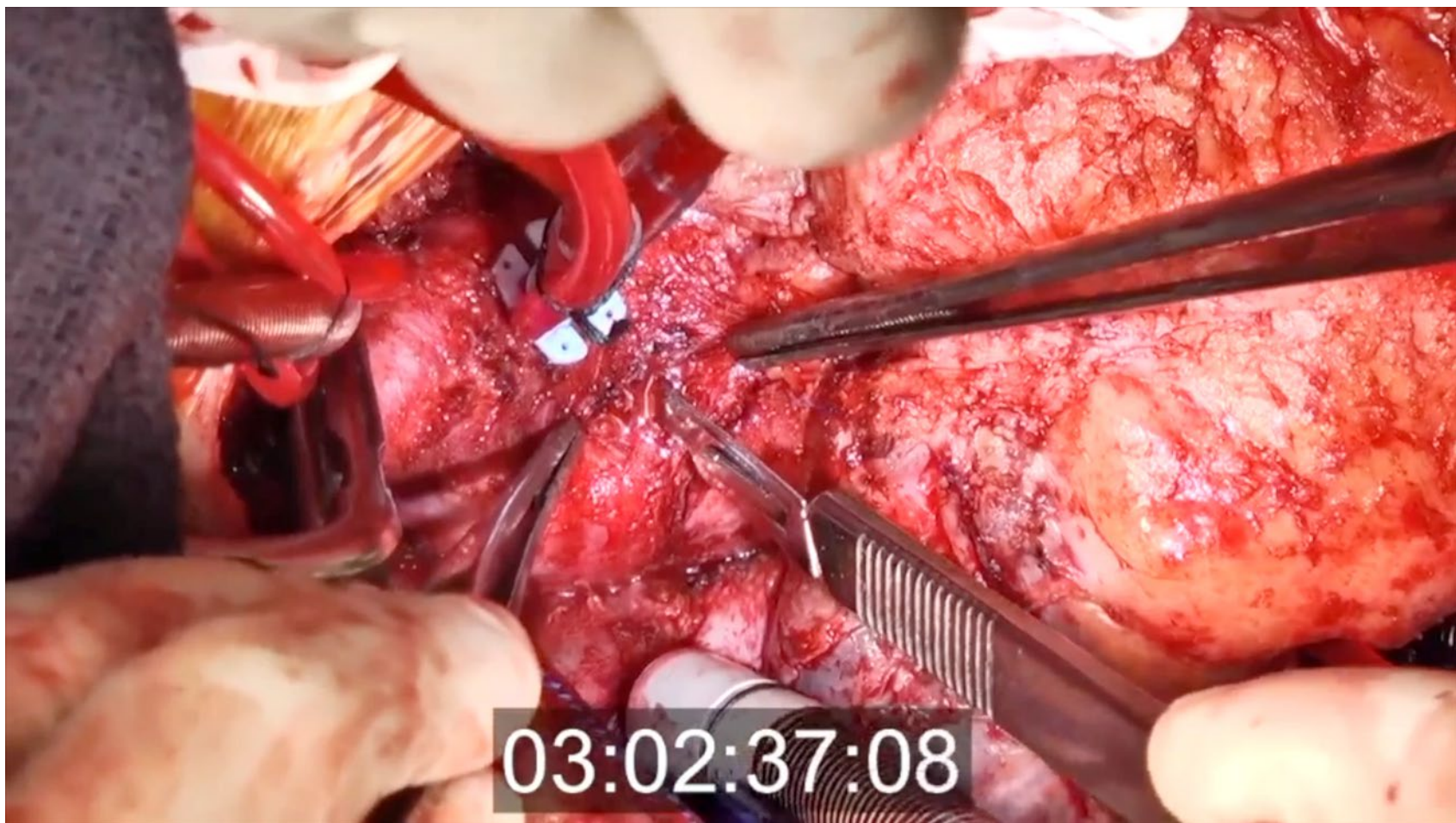
- Failed Florida Sleeve for BAV requiring AVR
- Subsequently develops aortic root abscess with vegetations on MV
- Positive MRSA

Dismissal CT after Florida Sleeve



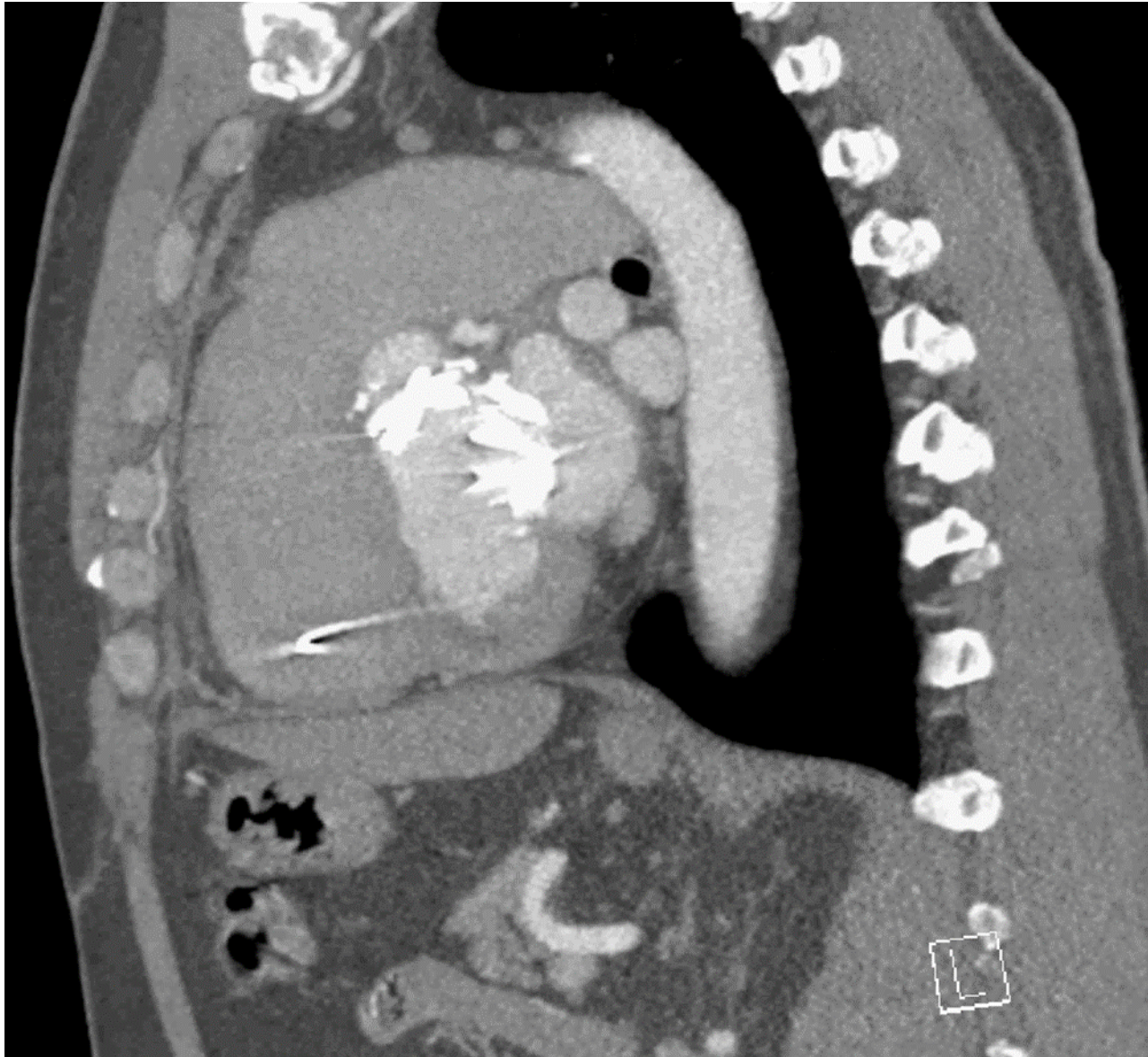
TEE





03:02:37:08

Follow Up: 6 Month CT





Thank You