

PERCUTANEOUS B-EVAR IN TAAA WITH JOTEC EXTRA DESIGN

EDITED LIVE CASE

by Philipp J. Schaefer



Disclosure

Speaker name:

Philipp J. Schaefer

I have the following potential conflicts of interest to report:

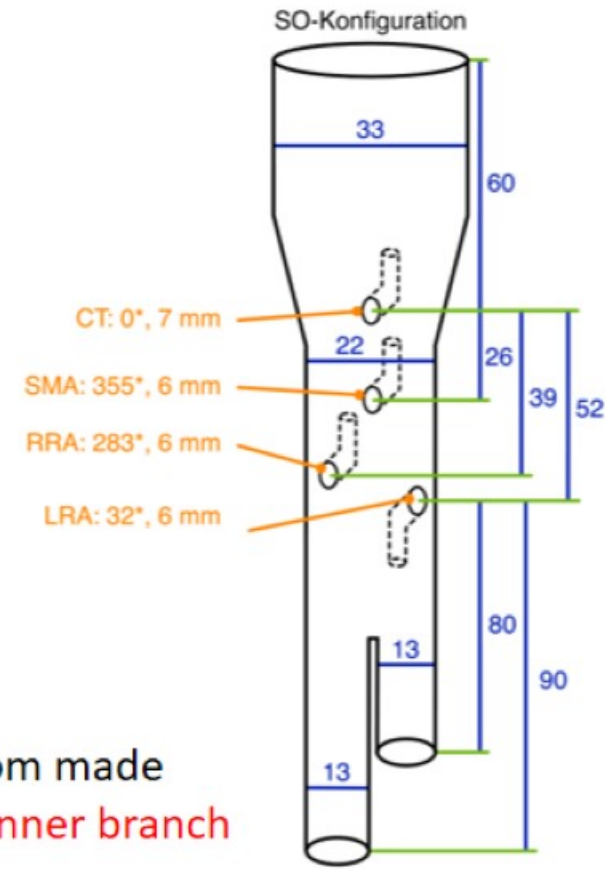
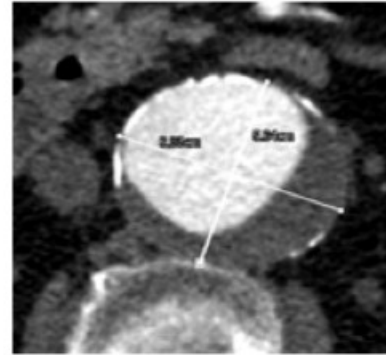
- Consulting
- Employment in industry
- Stockholder of a healthcare company
- Owner of a healthcare company
- Other(s)

- I do not have any potential conflict of interest

Percutaneous b-EVAR in TAAA with Jotec Extra Design

Case

- Male, 79 y.
- 6.9 cm TAAA (type IV)
- Comorbidities
 - Heart failure (EF 30%)
 - CAD, PAOD
 - Hypertension
 - Hyperlipidemia
 - Hyperuricemia
 - DM II



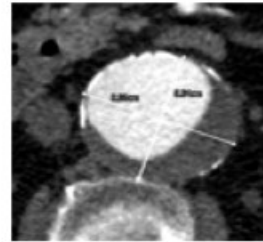
Custom made
4x inner branch



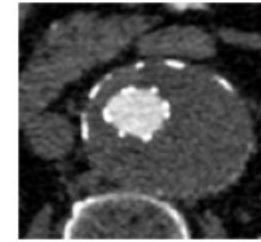
Percutaneous b-EVAR in TAAA with Jotec Extra Design

Procedure data

- Table time 2h 18min
- Deployment time MB 1h 6min
- Treatment time
 - CT 9min
 - SMA 7min
 - RRA 14min
 - LRA 10min
- Fluoroscopy time 47min
- Area dose product 12449 μGym^2
- Aerial kerma 1305mGy
- Operator dose 3 μSv



preinterventional CTA



1-mo FU CTA

